

How to Mount an Embroidered Dog Design on a Stretched Canvas Frame

Displaying your embroidered dog portrait on a stretched canvas frame is an elegant way to showcase your work. It gives your piece a polished, gallery-style finish—perfect for home décor, gifts, or pet memorials. Follow this simple step-by-step guide to mount your embroidery beautifully.

Tools You'll Need

- Tailor's chalk
- Staple gun
- Scissors
- Tweezers
- Ruler
- Flat-tip screwdriver

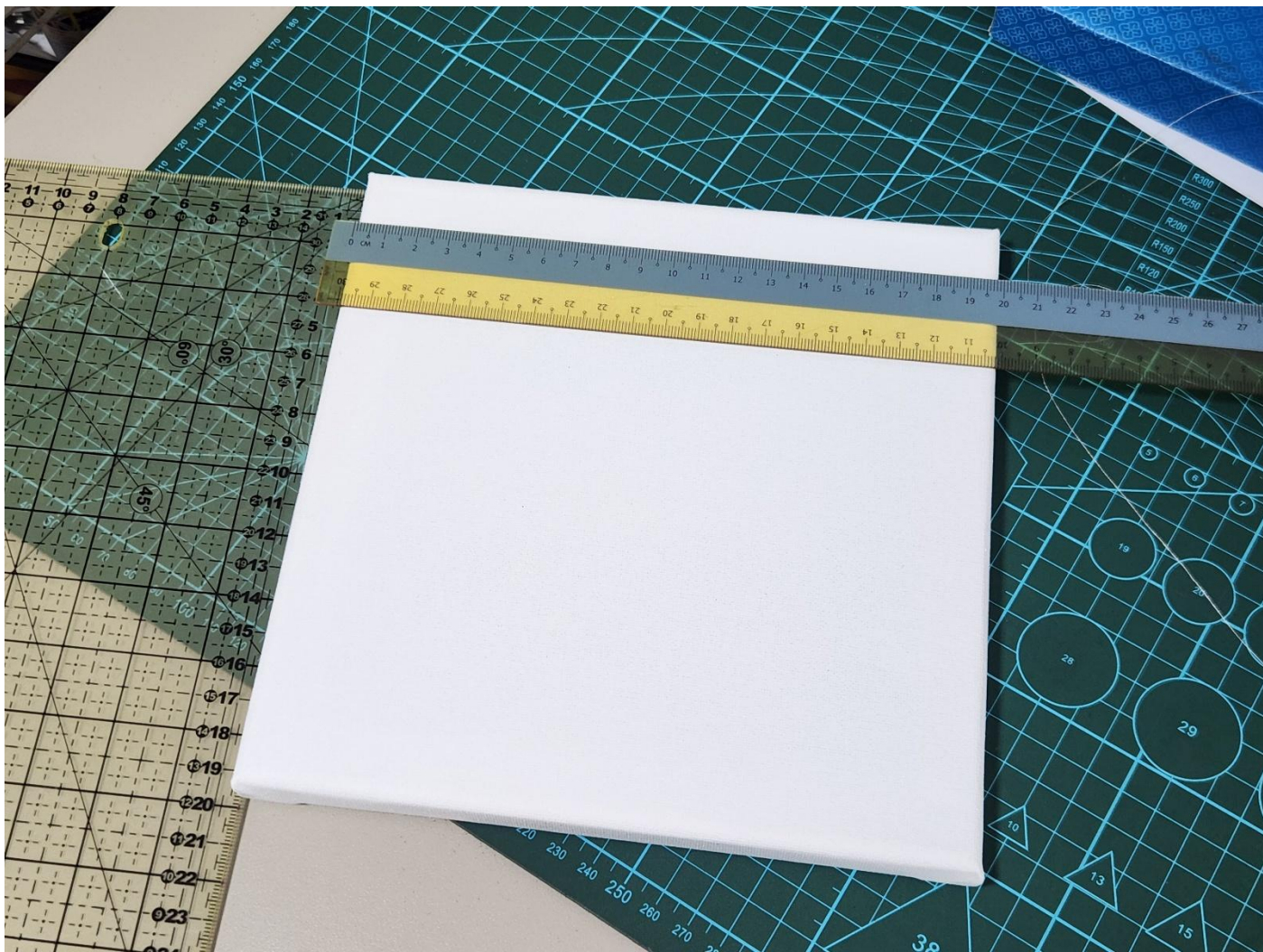
You'll also need a sturdy working table.



Materials You'll Need

- 20cm × 20cm stretched canvas frame
- Pre-cut cotton canvas fabric, 35cm × 35cm
- 1 layer of tearaway stabiliser





Step 1: Hoop and Prepare Your Embroidery

1. Load your outline dog embroidery design into your embroidery machine.
2. Place one layer of tearaway stabiliser behind your fabric and hoop both together, ensuring:
 - The fabric is smooth and wrinkle-free
 - The tension is firm
 - The design is properly centred
3. Once stitching is complete, unhoop your fabric and gently tear away the stabiliser from the back. Press lightly at the edges while doing this to protect the embroidery.

Step 2: Position the Embroidery on the Canvas Frame

1. Lay your embroidery face-down on a clean, flat surface.
2. Place the stretched canvas frame on top and adjust until the dog outline is centred.
There are two ways to centre the embroidery: visually or by measurement. Here is the step-by-step measurement method:

Width

- Design width = 8.4 cm

- Frame width = 20 cm $\rightarrow 20 - 8.4 = 11.6$ cm
- Divide by 2 $\rightarrow 5.8$ cm (space on each side of the design)

Height

- Design height = 9.5 cm
- Frame height = 20 cm $\rightarrow 20 - 9.5 = 10.5$ cm
- Divide by 2 $\rightarrow 5.25$ cm (space on the top and bottom)

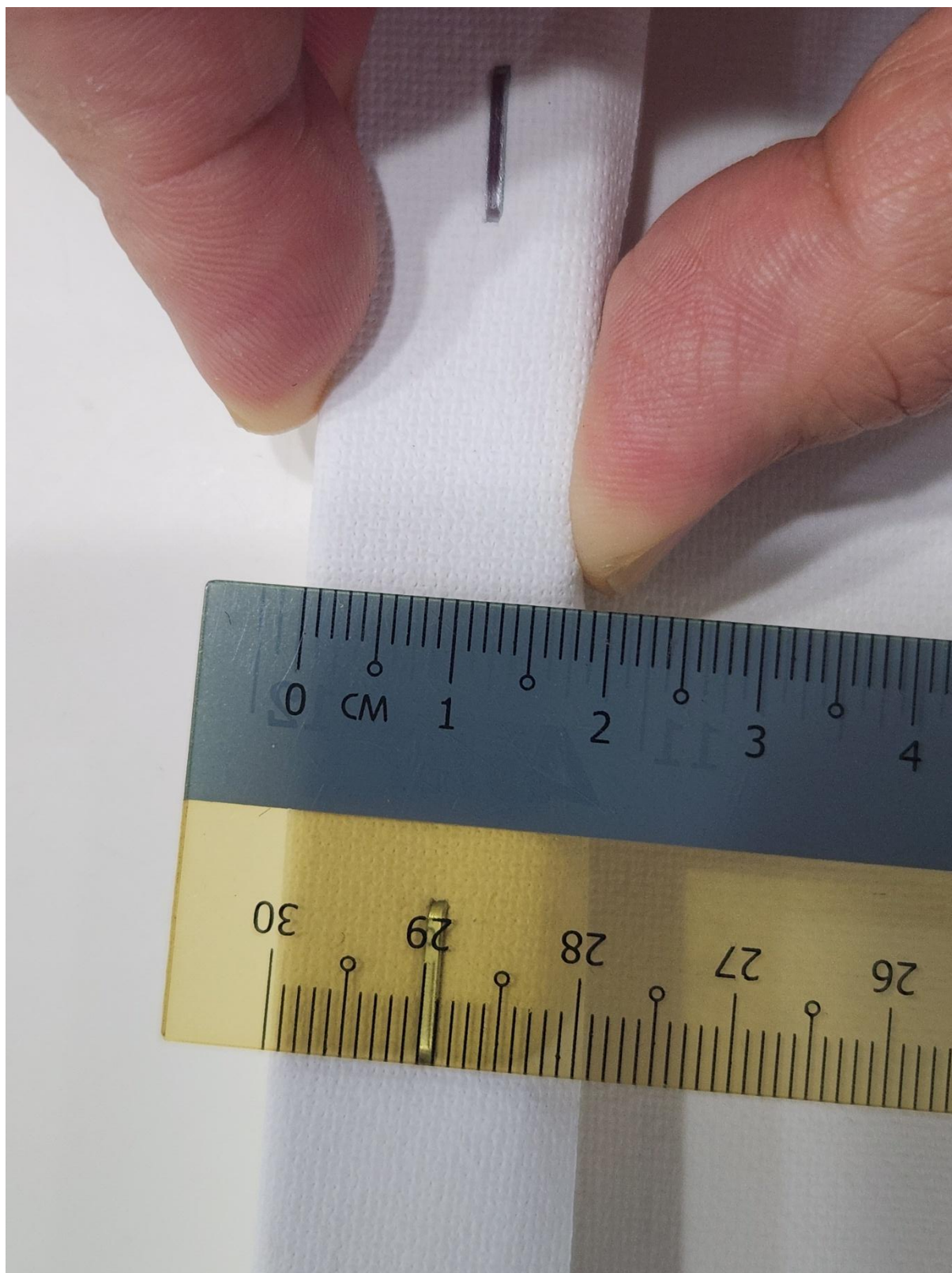
Adjust for Frame Border

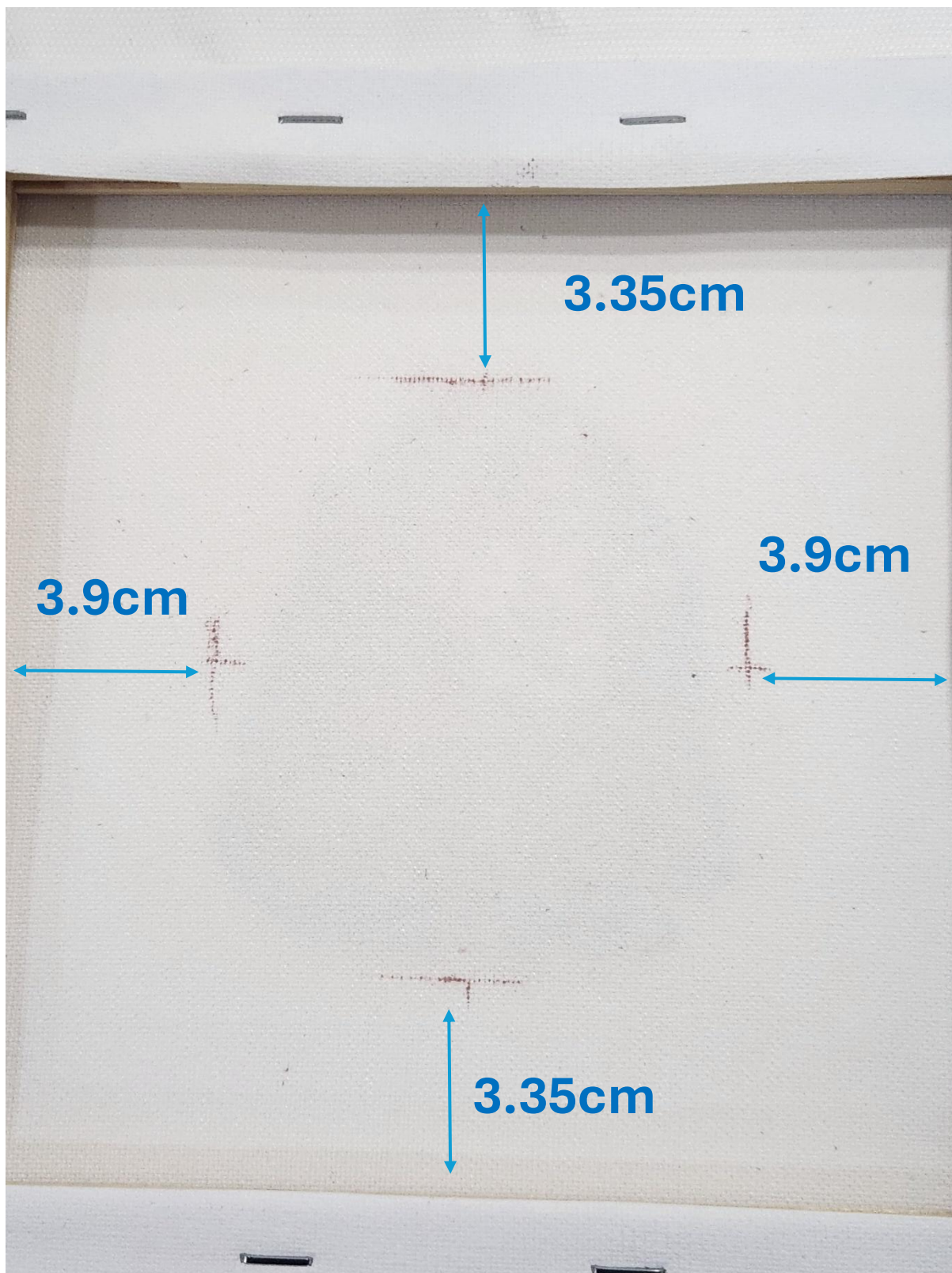
- Frame thickness = 1.9 cm
- Horizontal spacing $\rightarrow 5.8 - 1.9 = 3.9$ cm
- Vertical spacing $\rightarrow 5.25 - 1.9 = 3.35$ cm

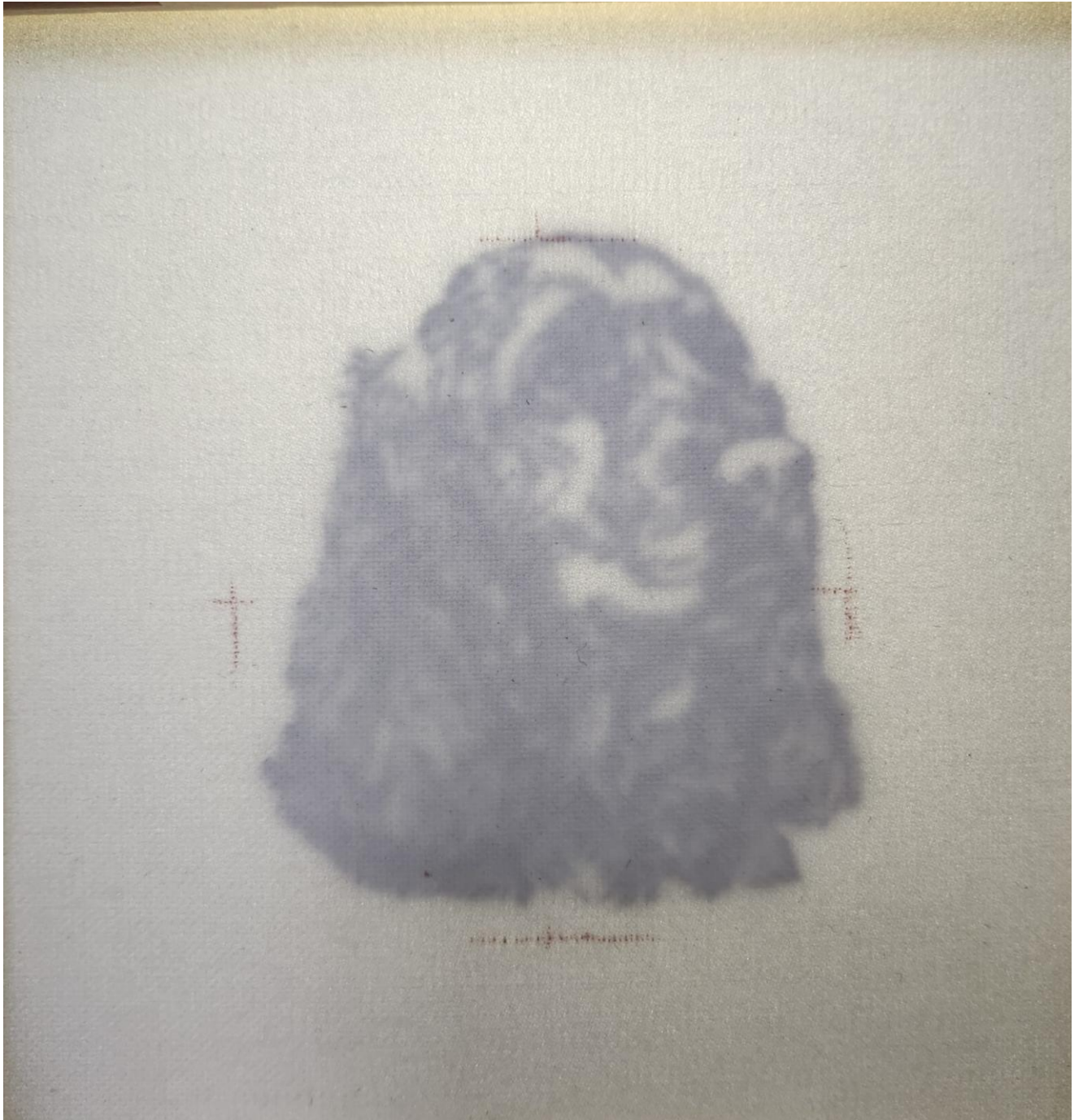
3. Mark the measured positions on the canvas using tailor's chalk.
4. Adjust the frame until the design fits within the marked area. Use a light source for guidance if needed.











Step 3: Stretch and Secure the Fabric

1. Fold one side of the fabric over the frame and staple it, starting from the middle.
2. Move to the opposite side, pull firmly, and staple in the middle. Begin with the top and bottom, checking alignment before continuing.
3. If the design is off-centre, remove staples carefully using a flat-tip screwdriver and adjust.

4. Continue stapling outwards from the middle, alternating sides to keep the tension even and the fabric smooth.



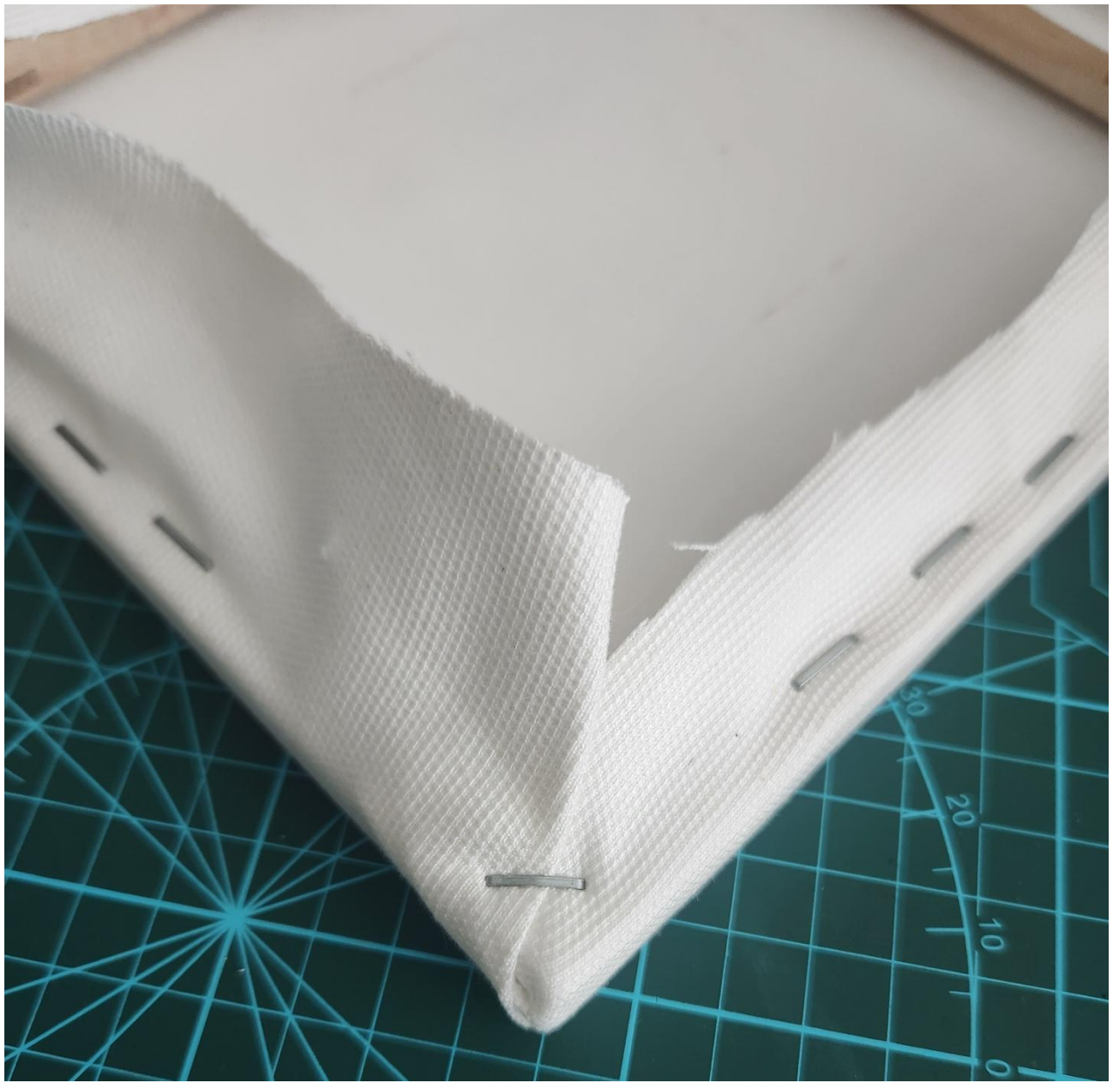


Step 4: Fold and Secure the Corners

1. Fold each corner neatly, like wrapping a gift, and staple it securely. Use tweezers to push the fabric in if needed, but handle with care due to the sharp tips.
2. Stretch and staple the sections adjacent to each corner.
3. Repeat for each corner in a clockwise or anti-clockwise direction.

4. Trim any excess fabric.Repeat these steps for the remaining corners.









Step 6: Displaying Your Embroidery

Since the cotton canvas fully wraps the wooden frame, adhesives cannot hold reliably. The safest method is:

Sawtooth Hanger (Most Reliable)

- Attach a small sawtooth hanger to the top inner edge of the frame.
- Perfect for small canvases like 20 × 20 cm and provides a strong, long-lasting hold.

